



Welcome to **SHIBATA HIGH SCHOOL**

3-7-6 Yutaka-chō, Shibata-shi, Niigata Prefecture,

Japan 〒957-8555

Tel 0254-22-2008 **Fax** 0254-26-6307

URL <http://www.shibata-h.nein.ed.jp>

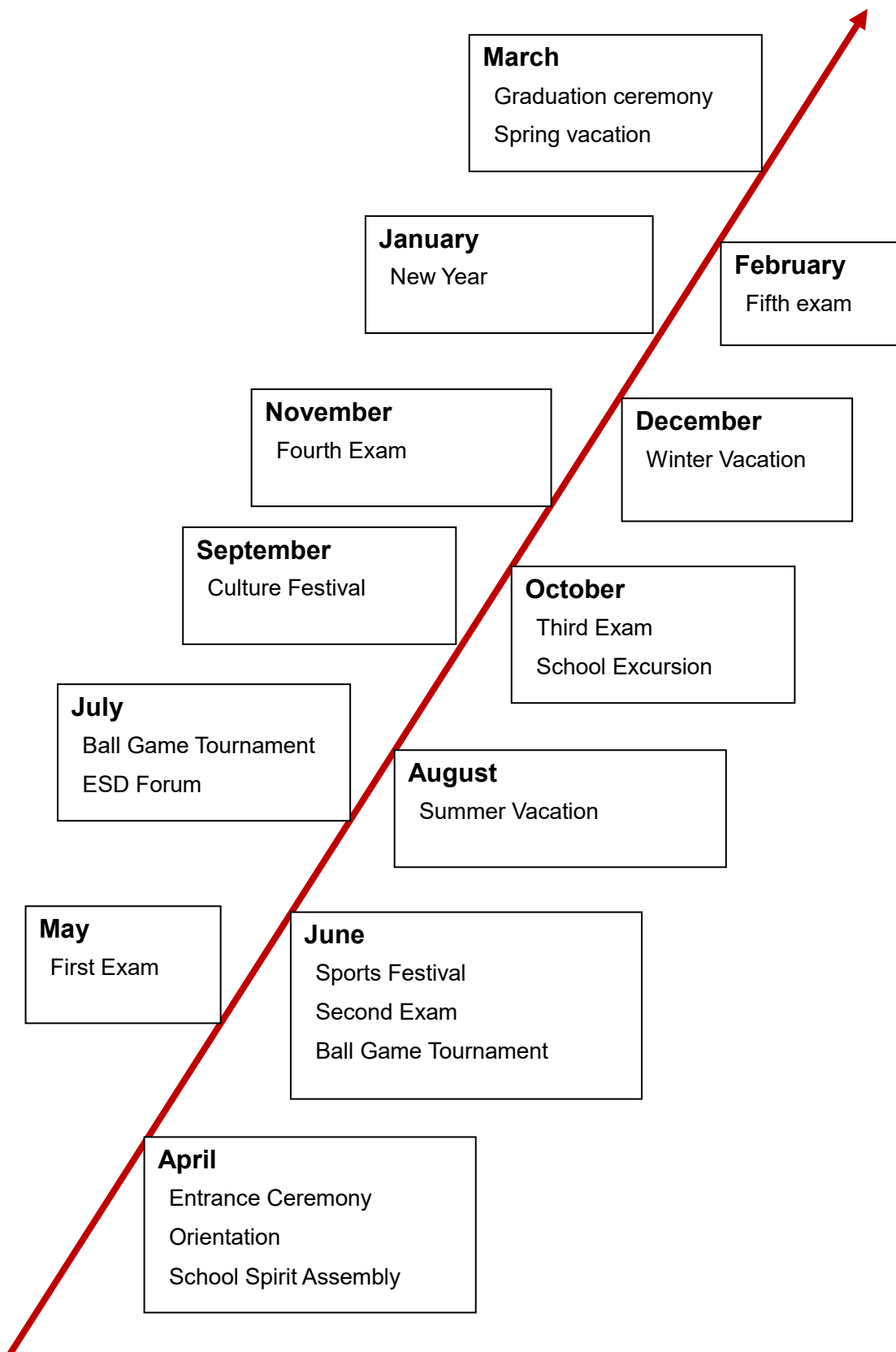
Shibata High School was founded on October 21, 1896. The school is located in Yutaka-chō in Shibata city. Currently, there are 883 students enrolled in our two courses of study, with 761 students in our school studies course, and 122 in our science and mathematics course.

Shibata High School is currently designated as a National Super Science High School, part of a program run by MEXT (Ministry of Education) to have a more science-focused curriculum aimed at producing students who are better prepared for a career in science, technology, engineering, or mathematics.

Our school has many unique elements. All second-year students take part in a class called “ESD Tankyu” or “ESD Research,” ESD meaning “Education for Sustainable Development.” Students take part in independent research projects with topics related to local issues, and present their findings at an assembly in July. Because Shibata High School has relationships with other schools overseas, often, foreign students also take part in this assembly.



Annual Schedule



Bell Schedule

Short Homeroom	8:40~8:45
1st	8:50~9:45
2nd	9:55~10:50
3rd	11:00~11:55
Lunch	11:55~12:40
4th	12:40~13:35
5th	13:45~14:40
6th	14:50~15:45
7th (Wednesday)	15:50~16:30

One class period is 55 minutes long.

On Wednesdays, we have a homeroom period at the end of the day.



Pictures of our classes.



Lunch Time

In Japan, it is rare for high schools to have a cafeteria. Instead, most students bring their own lunch and we eat in our classroom. For students who don't bring their own lunch, a local bakery named Bon Takeda will come to school at lunch time and sell their bread.

School Building



School Mall

We have a unique open space inside our main school building which we call the “school mall.” Often, you will see students studying in this space before and after school.

Our brass band and glee clubs will sometimes hold concerts on the grand staircase, seen in the background.



It was partly because of this unique design element that our school was selected as the filming location for the film “Strobe Edge,” in 2014.

Library



Gymnasium



Annual Events

ESD Forum

In July, we hold a forum for our students to present their independent ESD (Education for Sustainable Development) research projects. Select students will present their research to students and other visiting guests, including overseas students who are visiting.

Presented subjects come from a variety of topics, including mathematics, chemistry, civics, and education. In general, presentations are conducted in English.

After each presentation, students answer questions from the audience regarding their reports.



School Festivals

Sports Festival

Our school holds its sports festival in June. Every class decides on a theme, which is then translated into a class costume, a flag, and a rally banner. Our students put a lot of effort into making their materials, so it is always enjoyable to watch the welcome parade at the beginning of the festival.

Students compete in a variety of athletics, and awards are handed out at the end of the day. Also, students' costumes, flags, and banners are also judged and awarded; the hardest-working teams' efforts also pay off.



Cultural Festival “Sugiwara-sai”

In September, our school holds a culture festival, which we call the “Sugiwara-sai.” sort of activity to be hosted in their classroom: haunted houses, casinos, drink shops, and performances are just a few of the many events hosted by our students.

Our Art and Calligraphy clubs also show their works, and the advanced science courses present their research projects.

Furthermore, we often have special performances put on by the Brass Band, Glee Club, and even the Calligraphy Club.

Our families, friends, and even some local residents visit Shibata High School for the culture festival; it’s a very important part of our local heritage.



Student-run activity during the Culture Festival.



Calligraphy Club in performance



Brass Band in concert.

Orientation

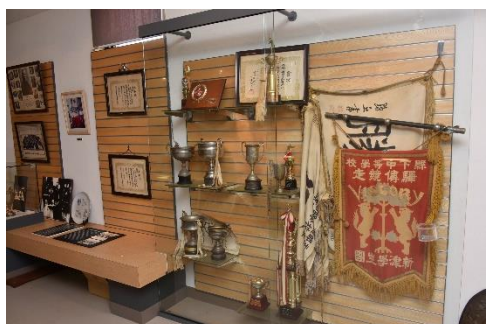
New students take part in a two-day orientation in April. Students learn about their new school life at Shibata High School, and how it differs from their Junior High School. Because it is held over two days, new students have a chance to get to know each other and become part of their new community.

School Spirit Assembly

Our school is one of the oldest in Niigata Prefecture and has a series of traditional school spirit assemblies in April for new and returning students.

We must memorize all our different school songs and perform them at these events.

The practice is very difficult, but when we reach the final day, the cheering squad who has been leading the assemblies praises us for our hard work and welcomes us to Shibata High School.



List of School Clubs

Sports Teams

Baseball, Basketball, Japanese Archery, Judo, Karate, Kendo, Rugby, Soccer, Soft Tennis, Swimming, Tennis, Track and Field, Volleyball.

Cultural Clubs

Art, Biology, Brass Band, Calligraphy, Chemistry, Drama, English, Glee, Literature, Mathematics, Photography, Physics.



There are 28 student clubs at Shibata. We use a word to describe our lives, “Bunbu-Ryodo,” meaning that we work hard at both school and club activities. By training themselves to work as teams, our students are better preparing themselves for their future adult life. Our students are very enthusiastic about their club activities.